

REV.  
D

AS4499

RATIONALE

CORRECTED NOTE NUMBERS AND CLARIFIED COVER CODES SHOWN IN TABLE 3. UPDATED NOTE 2 TO CURRENT STANDARD QPL WORDING.

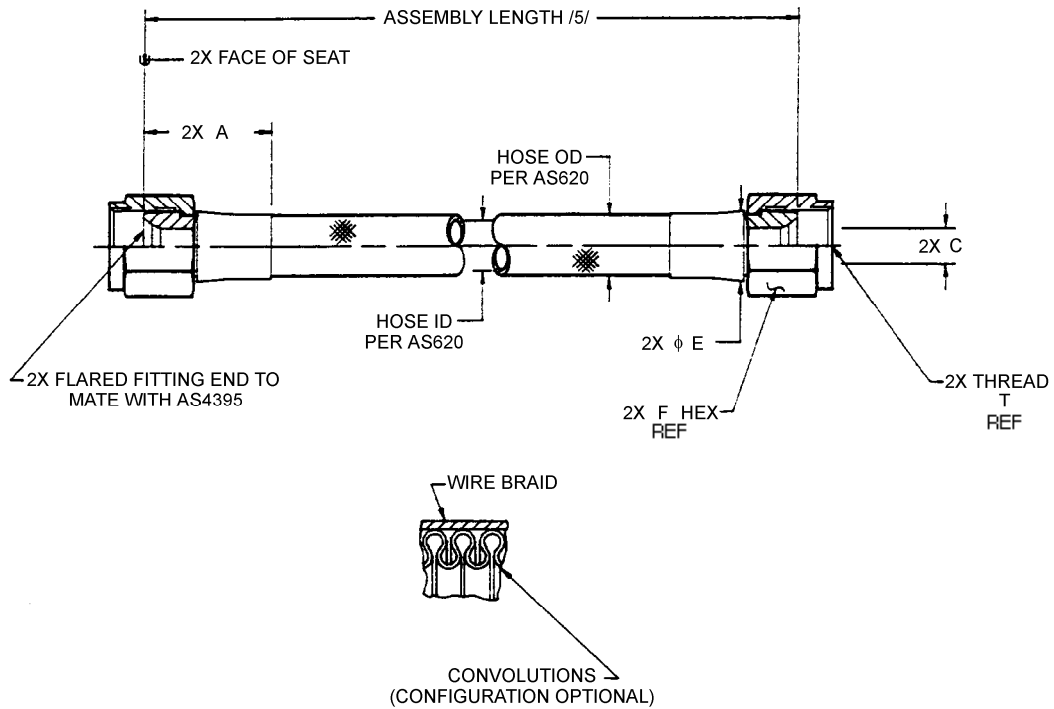


FIGURE 1 - HOSE ASSEMBLY

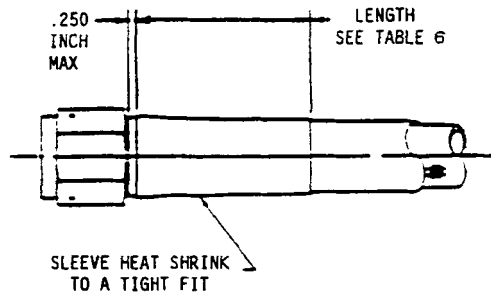
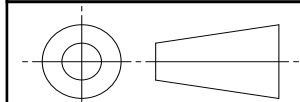


FIGURE 2 - SPIRAL AND POLYESTER ABRASION COVER /6/, /7/

SAE values your input. To provide feedback on this Technical Report, please visit <http://www.sae.org/technical/standards/AS4499D>

THIRD ANGLE PROJECTION



CUSTODIAN: SAE G-3/G-3D

PROCUREMENT SPECIFICATION: AS620 /2/



**AEROSPACE STANDARD**

HOSE ASSEMBLY, CONVOLUTED, POLYTETRAFLUOROETHYLENE, METALLIC REINFORCED CONDUCTIVE, FLARED, STRAIGHT TO STRAIGHT

AS4499  
SHEET 1 OF 5

REV.  
D

SAE Technical Standards Board Rules provide that: "This report is published by SAE to advance the state of technical and engineering sciences. The use of this report is entirely voluntary, and its applicability and suitability for any particular use, including any patent infringement arising therefrom, is the sole responsibility of the user." SAE reviews each technical report at least every five years at which time it may be revised, reaffirmed, stabilized, or cancelled. SAE invites your written comments and suggestions.

**TABLE 1 - ASSEMBLY DIMENSIONS**

HOSE ASSEMBLY AS4499 SIZE CODE	HOSE ASSEMBLY SIZE REF	THREAD T PER AS8879 REF	A MAX	ØC /8/ MIN	ØE /9/ MAX WITHOUT SLEEVING	F HEX REF
04	.250	.4375-20UNJF-3B	1.20	.132	.55	.56
06	.375	.5625-18UNJF-3B	1.28	.256	.68	.69
08	.500	.7500-16UNJF-3B	1.44	.345	.86	.88
10	.625	.8750-14UNJF-3B	1.58	.430	.95	1.00
12	.750	1.0625-12UNJ-3B	1.74	.635	1.28	1.25
16	1.000	1.3125-12UNJ-3B	1.79	.835	1.47	1.50
20	1.250	1.6250-12UNJ-3B	2.29	1.085	1.70	1.81
24	1.500	1.8750-12UNJ-3B	2.38	1.310	2.00	2.12
32	2.000	2.5000-12UNJ-3B	3.00	1.780	2.56	2.75

**TABLE 2 - ASSEMBLY LENGTH TOLERANCE**

+ .250/- .125 INCHES FOR LENGTHS UNDER 18 INCHES
+ .500/- .250 INCHES FOR LENGTHS FROM 18 TO 36 INCHES EXL.
+ 1.000/- .500 INCHES FOR LENGTHS FROM 36 TO 50 INCHES EXL.
+ 2%/- 1% FOR LENGTHS 50 INCHES AND OVER

**TABLE 3 - HOSE OR COVER OUTSIDE DIAMETER**

COVER CODE	HOSE OR TYPE OF PROTECTIVE COVER	HOSE SIZE									UPPER TEMP. LIMIT °F
		.250	.375	.500	.625	.750	1.00	1.25	1.50	2.00	
-	HOSE ONLY PER AS620	.413/.477	.523/.587	.723/.787	.818/.882	1.028/1.092	1.266/1.330	1.494/1.558	1.758/1.822	2.293/2.357	-
B	SPIRAL ABRASION /6/	.505	.615	.825	.935	1.140	1.358	1.630	1.890	2.395	275
H	INTEGRAL FIRESLEEVE /10/	.710/.760	.798/.862	.978/1.055	1.100/1.202	1.300/1.392	1.478/1.610	1.718/1.840	1.968/2.120	2.480/2.564	400
N	FIRESLEEVE SIL/FG (AS1072)	.900	1.030	1.150	1.380	1.590	1.800	2.060	2.320	2.740	400
K	INTEGRAL ABRASION /7/ (BRAIDED) POLYESTER	.468/.532	.598/.662	.808/.872	.888/.952	1.103/1.167	1.313/1.405	1.568/1.632	1.838/1.902	2.370/2.452	300
J	INTEGRAL FIRESLEEVE /13/	.653/.717	.763/.827	.963/1.027	1.058/1.122	1.268/1.332	1.498/1.562	-	-	2.480/2.564	400

**TABLE 4 - HOSE ASSEMBLIES PHYSICAL CHARACTERISTICS**

HOSE SIZE REF	OPERATING PRESSURE MAX PSI	PROOF PRESSURE MIN PSI	BURST PRESSURES	BURST PRESSURES	BEND RADIUS AT INSIDE OF BEND INCHES (HOSE ONLY)
			ROOM TEMP MIN PSI	HIGH TEMP MIN PSI	
04	1000	2000	4000	2800	1.25
06	1000	2000	4000	2800	2.25
08	1000	2000	4000	2800	2.88
10	1000	1800	3600	2500	3.00
12	1000	1800	3600	2500	3.75
16	1000	1800	3600	2500	5.00
20	1000	1800	3600	2500	6.25
24	750	1500	3000	2100	7.50
32	250	500	1000	700	10.00

	<b>AEROSPACE STANDARD</b>		<b>AS4499</b> SHEET 2 OF 5	<b>REV. D</b>
	HOSE ASSEMBLY, CONVOLUTED, POLYTETRAFLUOROETHYLENE, METALLIC REINFORCED CONDUCTIVE, FLARED, STRAIGHT TO STRAIGHT			